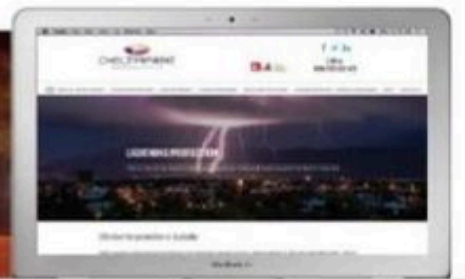
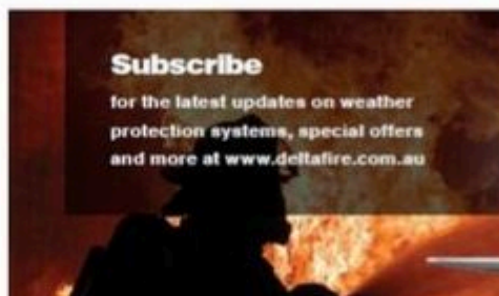


FIRE PROTECTION SOLUTIONS FOR MOBILE & DIESEL POWERED EQUIPMENT





At **Delta Fire Australasia Pty Ltd** we specialize in fire risk management systems, for mobile plant and equipment. We are also able to design and install fire suppression systems for kitchen, high risk electrical systems such as telecommunication and computer facilities, aircraft hangars and many other heavy industrial applications.



WARNING
THIS EQUIPMENT IS FITTED WITH AN IPES FIRE SUPPRESSION SYSTEM WHICH MAY OPERATE AUTOMATICALLY AND SHUT DOWN EQUIPMENT



DELTA FIRE CAPABILITIES

RISK MANAGEMENT

With the use of the WRAC system to help our customers understand the risks and take preventative measures to reduce the likelihood of fire in mobile machines. We can offer them a range of fire suppression equipment to reduce the consequences of fire.

RISK MANAGEMENT PLAN FOR RISK 1 :
INHERENT RISK RATING

Likelihood	Consequence				
	1 - Minor	2 - Medium	3 - Serious	4 - Major	5 - Catastrophic
A - Almost / Certain	Moderate	High	Critical	Critical	Critical
B - Likely	Moderate	High	High	Critical	Critical
C - Possible	Low	Moderate	High	Critical	Critical
D - Unlikely	Low	Low	Moderate	High	Critical
E - Rare	Low	Low	Moderate	High	High

DESIGN

Delta Fire designs are verified by testing on the most advanced fire suppression simulator in the Australasia region. By following proper design procedures and following AS-5062 with the use of advanced software our comprehensive documentation will satisfy the toughest audits.

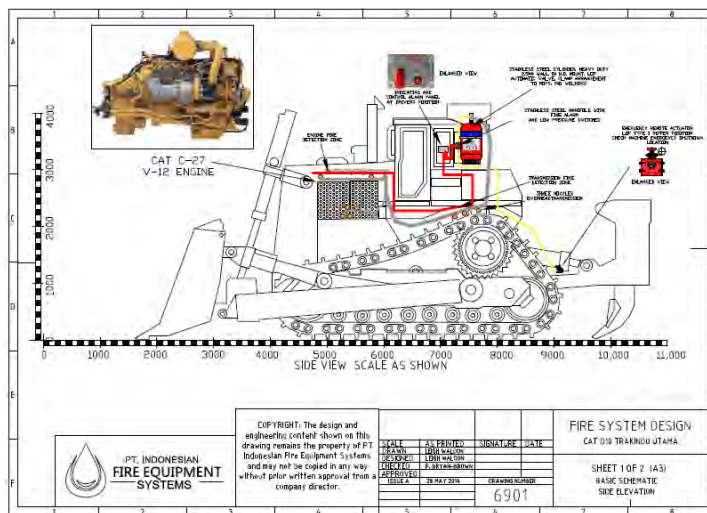


INSTALLATION & MAINTENANCE

We can design, and install your foam fire suppression system onsite or at port side.

All commissioning documentation including parts manuals, discharge testing, and AHJ sign-offs are handed over at the completion of final testing in compliance with AS 5062.

We can offer ongoing site maintenance to keep your fire system in “an ever ready” reliable condition.



DELTA FIRE FOAM FIRE SUPPRESSION SYSTEM PRODUCT OVERVIEW

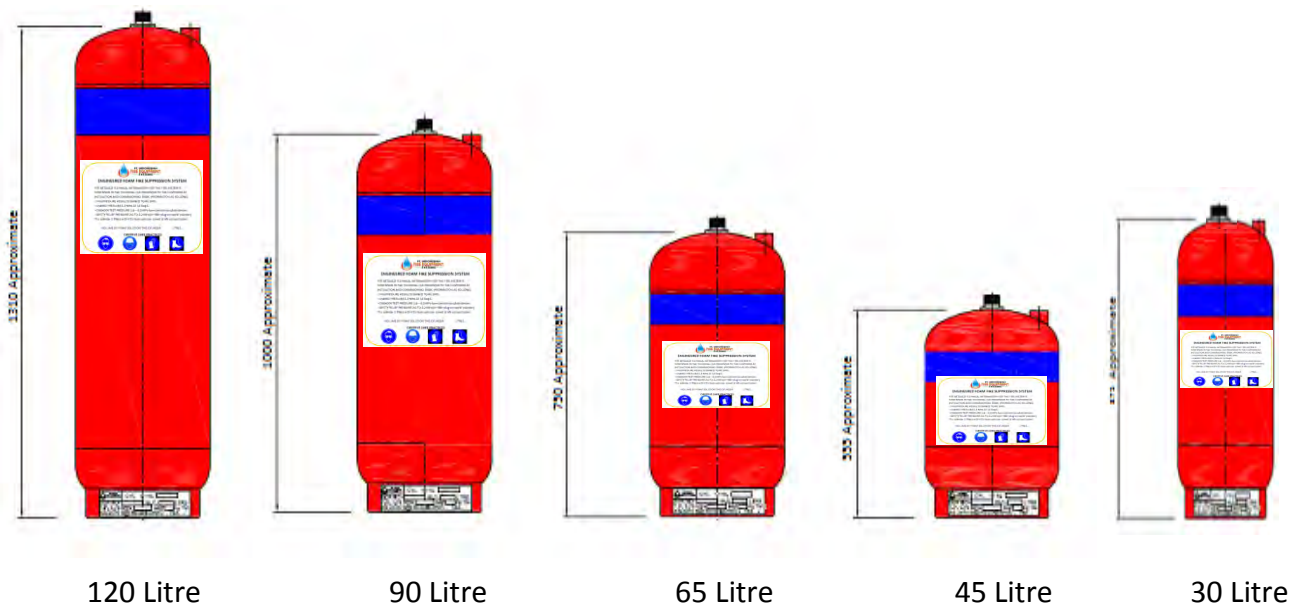
CYLINDER - PRESSURE VESSELS

There are a range of cylinders designed to manage the largest earth moving equipment down to the smallest of mobile equipment or light vehicles.

All **Delta Fire** 368 mm cylinders are made from 2.5 mm thick Stainless Steel for extra strength and are manufactured to AS2470, they are hydrostatically pressure tested to 3.0Mpa under AS 2030 test conditions. The cylinder design is registered with the Australian government under NSW WorkCover , Certificate no – GC 6-174641/13.

They are powder coated Signal Red with DuPont UV resistant powder incorporating the Aqua Marine Blue stripe signifying the contents for AFFF. The specially designed foot- ring eliminates harmonic cracking of the lower dome as often seen on dozers or other machinery that has high operating resonance frequencies.

The 120 Litre is the biggest cylinder available in the market, the remaining 90 litre, 65 litre, 45 litre and the 30 litre completing the line up.



VALVES AND CONTROL SYSTEMS



Delta Fire uses a $\frac{3}{4}$ inch Stainless Steel reduced height cylinder main valve that adapts to the requirements of both LOP and ROP with our specially designed cap. It can be manifolded together in multiple cylinder systems or used as a single cylinder high discharge flow valve for the standard system.

Remote actuators are made from durable brass and are housed in Stainless Steel powder coated mount boxes. They are mounted within easy reach of the operator in the cabin and externally in easy to access areas for immediate activation of the system when used.



FIRE DETECTION AND SYSTEM ACTUATION

The actuation systems available are supplied to meet each customer's preference. Experience shows that the LOP (loss of pressure) system has the quickest response time and is the most favoured. We can supply:

- A - Fire wire or linear detection which uses a 3 cable wire with special polymers that will disintegrate at set temperatures sending a signal to the panel which then actuates the system.
- B - The rise of pressure fire tubes use a proprietary thermal cord that ignites inside the pressure tube and sends a strong pulse signal via the manifold block to the valve. This is an unsupervised system and will always have 2 tubes mounted in unison as double redundancy for the actuation system.
- C - The extremely fast acting loss of pressure system uses a thermoplastic polymer tube which controls the discharge at the valve the instant it ruptures due to contact with flame.
- D - Optical sensing using IR imaging for large hard to cover slew areas on large shovels and excavators. This system is used for detection of fire ignition in extremely high risk high value equipment.

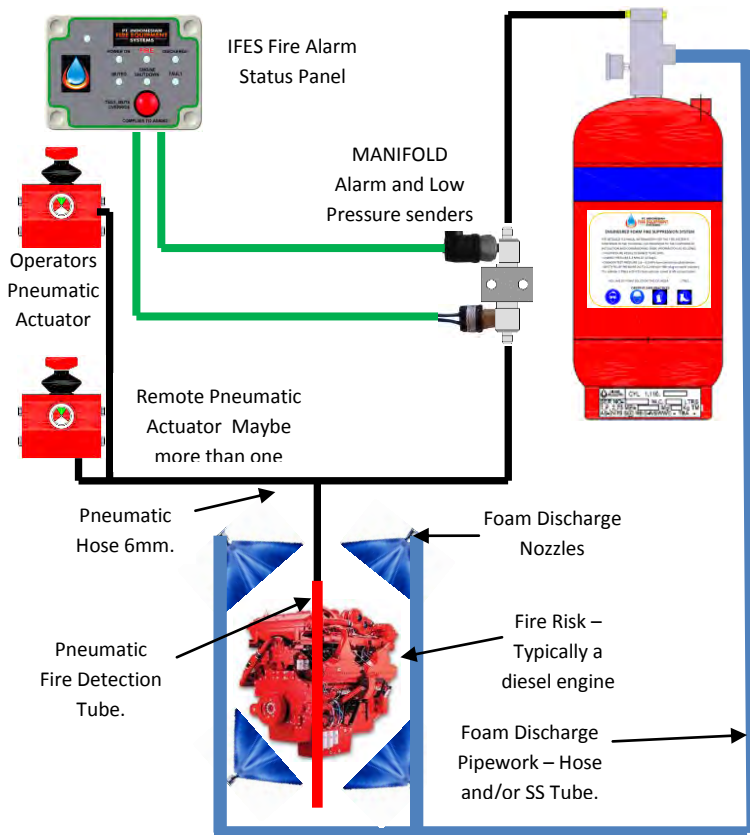
THE ALARM PANELS.

Our fire alarm system panels are manufactured to comply with AS 5062. The control panel has an internal back-up battery so the system will remain active while the machine is parked or left unattended, they can be programmed to manage different functions using Alarm Ware or installed as preset from the factory. They have data logging capability which enables technicians to download maintenance information and fault codes that can be kept as a permanent PDF record in the vehicle history files.



A Control Indicating Alarm Panel allows the operator to actuate the fire system with the flick of a switch.

The Status Indicating Fire Alarm Panel is used for completely automatic systems.



It is a compact sophisticated fire alarm status panel. It can be neatly installed in a swivel mount bracket for efficient use by the operator while leaving the cabin area clear and unimpeded.



FULL SERVICE AND PARTS BACK UP SUPPORT

Delta Fire are product support specialists. We offer field service back up and support, and have a complete range of all installation and service parts available in stock. We can provide training for customers support staff that are required to maintain installed systems. Detailed inspection sheets and software tools are available for technicians use.

By special appointment we can illustrate by use of the live fire simulator a direct replica of the system designed for the customers equipment. The simulator is again useful for the practical support it offers for technician training and accreditation.

All **Delta Fire** employees who are involved with the fire suppression systems, including the designers, the installation crew, and site maintenance technicians have completed and passed their training courses and are registered as competent for purpose and duty.

For more information:

Telephone: **1800 DELTAFIRE**

Head Office:

Delta Fire & Safety (QLD) Pty Ltd

PO Box 2149

MANSFIELD QLD 4122

Telephone: **(07) 3349 7817**

Fax: **(07) 3219 4182**

Email: **sales@deltafire.com.au**

www.deltafire.com.au

